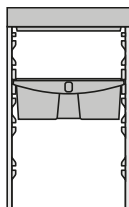


## PRODUCT SHEET

Date of issue: 30/06/23

### ALPHA 6105 - collection + storage



### APPLICATIONS

Trolley ideal for waste collection and the transport of cleaning products and equipments.

### ECO BOX



#### PSV PRODUCT

Product partially made of PSV certified plastic components - Plastic Second Life: the first Italian and European brand of environmental product certification that guarantees and makes it easier to identify goods obtained using recycled plastics



#### CARBON FOOTPRINT

Filmop is certified according to the Carbon Footprint Systematic Approach, carried out in compliance with the UNI EN ISO 14067:2018 standard, which allows to quantify the environmental impact of the product expressed in CO<sub>2</sub> emitted at each stage of the life cycle



#### ECO-FRIENDLY PRODUCT

Product made of separable materials and, consequently, recyclable at the end of its life  
Product sold in packaging compliant with Legislative Decree 116 of 03-09-2020 concerning the obligation of environmental labeling for correct disposal at the end of use. 99% of the cardboard packaging used by the company is made on average with 80% recycled paper

# PRODUCT SHEET

Date of issue: 30/06/23

## FEATURES

- Made of high quality polypropylene copolymer: light, shock-proof, heavy duty and low-temperature resistant
- Strong, tough, ergonomic, modular, easy to assemble and clean
- The base can be equipped with an additional fifth wheel in the middle to be much stronger in case of a heavy loaded trolley
- The vertical frames guarantee the highest hygiene, separating the waste collection compartment from the rest of the trolley
- Bagholder equipped with ergonomic push-bar, handle supports and hook. It is available in different versions: 120 L, 2x60 L, 1x40 L + 1x80 L, 3x40 L
- Possibility to replace the fixed bagholder with a foldable bagholder which reduce the overall dimensions of the trolley after use (space saver bagholder)
- The central basket has a label which can be customized writing the operator's name, the working area or other useful information
- The fixed side walls and the side doors are completely smooth and upon request, they can be customized with drawings, pictures or logo
- Door for central storage compartment equipped with removable key and grip with key compartment
- The trolley can be equipped with "HUSH" system: the shock-absorbing pistons inserted in the bag holder allow a soft and very silent closure of the cover
- Several combinations of shelves and drawers are available: drawers 10 L, 22 L, 40 L, equipped with slide out limiter, with or without lock
- The trolley can be equipped with hooks, baskets with dividers, carry baskets, handle holders and many other accessories: we suggest you to check our technical catalogue in the "components and accessories" section of our Alpha line of trolleys in order to know the complete range of the available accessories.
- Latex-free product

## MATERIAL

Polypropylene copolymer

| REF.          | NET WEIGHT<br>(kg)  | SIZE (cm)<br>↓ ↓ ↓ | PCK | VOLUME<br>(m³) | GROSS WEIGHT<br>(kg) |
|---------------|---|--------------------|-----|----------------|----------------------|
| 0000MA6105U00 | 19,8  | 133x58x102         | 1   | 0,261          | 22,05                |
| 0000SM00165   | Set of T-shaped light grey closing plugs for vertical frames (6 pcs)                    |                    |     |                | 2 pcs                |
| P066011U      | Long base with wheels ø 100 mm  |                    |     |                | 1 pc.                |
| P1229906U     | Grey plastic drawer 22 L without key  |                    |     |                | 1 pc.                |
| P175000U      | Supporting plastic plate for Alpha trolleys   |                    |     |                | 1 pc.                |
| P2039903E     | Vertical frame, 1 side with slides + 1 side for T-plugs, complete with screws and plugs |                    |     |                | 2 pcs                |
| P2199906U     | Central plastic basket (female-female version) with plugs                               |                    |     |                | 1 pc.                |
| P3059953E     | Fixed side wall with fixing pins  |                    |     |                | 1 pc.                |
| P3059954E     | Right door with fixing pins   |                    |     |                | 1 pc.                |
| P8161111U     | 120l waste bag holder, male fitting, with dustpan hook and handle clip                  |                    |     |                | 2 pcs                |

## ACCESSORIES TO ORDER AS SEPARATE ITEMS

|          |  |       |
|----------|--|-------|
| 3650A    | Blue plastic-coated bag 73x97 cm, maximum capacity 120 L | 1 pc. |
| 3650B    | Red plastified bag 73x97,5 cm, capacity 120 L            | 1 pc. |
| P291918A | Blue cover for bag holder 120 L                          | 1 pc. |
| P291918B | Red cover for bag holder 120 L                           | 1 pc. |

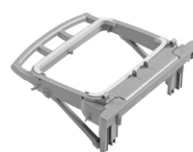
## ON REQUEST, WITH SURCHARGE



Rubber wheels ø 125 mm

**TROLLEY REF.**  
0000MA6305U00


Wheels ø 125 mm

**TROLLEY REF.**  
0000MA6605U00


Foldable bag holder 120 L

**TROLLEY REF.**  
0300MA6105U00

Disclaimer: Filmop International Srl reserves the right to update the contents of this document at any time and without notice.



# PRODUCT SHEET

Date of issue: 30/06/23

## GENERAL PRODUCT SAFETY

The products sold by us do not need a product certification, as they are in compliance with the definition in Legislative Decree 206 of 06.09.2005

## DECLARATION OF CONFORMITY

All the products sold by us are in compliance with the laws in force regarding safety and are covered by an insurance policy "Civil responsibility for products"