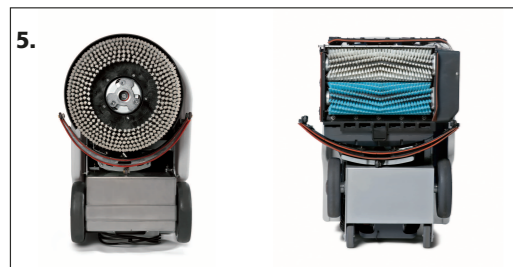
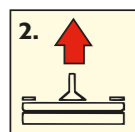




# Principle maintenance rules

## Vispa 35 E/B/Bs

### AT THE END OF THE WORK

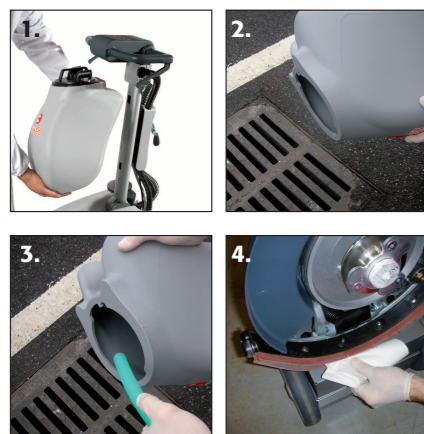


1. Close the water tap
2. Lift the squeegee
3. Turn off the suction motor switch
4. Turn off the brush motor switch
5. Check the wear of the brushes or discs (to be replaced before the pad holder is being damaged)



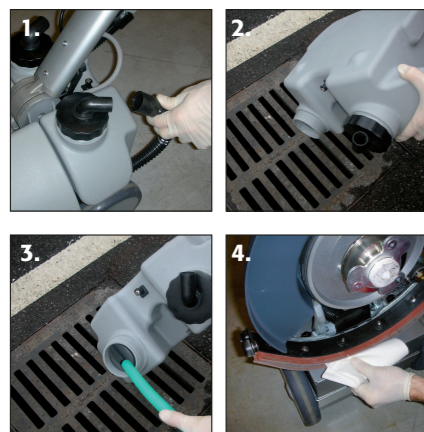
**Do not vacuum flammable products such as: alcohol, spirits, trichloroethylene, solvents, etc.**

### DAILY MAINTENANCE



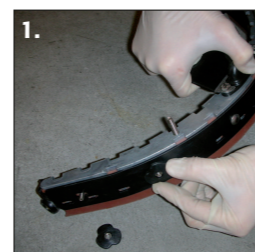
VERSION B-BS

1. Remove the 2 suction hoses and the recovery tank
2. Empty the recovery tank
3. **Cleaning the recovery tank**  
Open the recovery tank lid and clean the tank with a water jet.
4. **Cleaning the squeegee**  
Clean the squeegee with a jet of water and clean the lower part by hand



VERSION E

### WEEKLY MAINTENANCE



1. **Rear squeegee rubber**  
(if worn, change the dryer side; replace after all sides are worn)
2. **Cleaning the suction hose**  
Drying is insufficient in case of obstruction of the suction hose. Clean it with a water jet introduced from the side where it is connected to the tank
3. **Cleaning the suction motor filter**  
Extract the suction motor float filter and clean it with a jet of water.



**You should always wear protective gloves to avoid the risk of serious injury to hands**